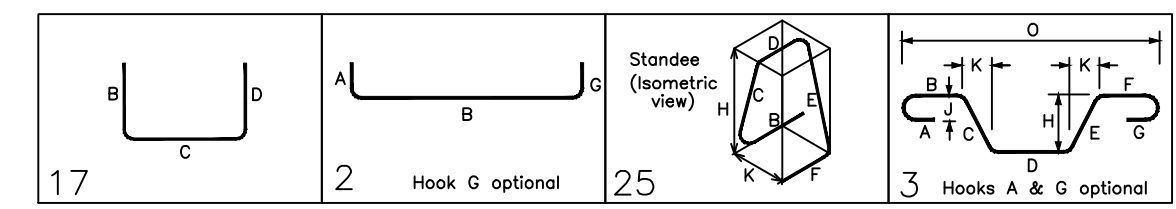


Bar No.	Qty	Size	Total Length	Feet	W	D	C	W	D	C	W	D	C	W	D	C
SF10	13	#5	12'-0"	17			4'-0"									
BF02	12	#8	8'-0"	2	1'-4"	6'-0"	7'-0"									
BF03	8	#8	6'-0"	2	1'-4"	3'-4"										
SF06	22	#5	10'-8"	17			0'-10"	5'-4"	4'-6"							
SF07	64	#5	1'-6"	17			0'-8"		0'-10"							
SF08	24	#5	5'-1"	2	0'-10"	3'-5"										
SF09	32	#5	8'-6"	17			3'-10"	4'-8"								
BF01	3	#8	3'-4"	2	1'-4"	0'-8"										
BF05	2	#8	3'-10"	2	1'-4"	2'-6"										
SF09	36	#5	6'-6"	23			1'-6"	1'-4"	1'-6"	1'-4"	1'-6"	1'-4"	0'-8"			
SF11	30	#5	5'-8"	23			1'-6"	0'-11"	0'-10"	0'-11"	1'-6"	0'-11"	0'-5"			
BF02	8	#8	7'-0"	2	0'-0"	7'-0"							0'-9"	0'-8"		
BF01	24	#8	7'-8"	2	0'-9"	7'-0"							0'-8"	0'-7"	7'-8"	



**LAP SCHEDULE (BLACK):**  
Per ACI 318 (4000 PSI)  
As per Lap Schedule REF: S-02

BAR#	LENGTHS	
	TOP	OTHERS
#3	2'-0"	1'-6"
#4	2'-8"	2'-1"
#5	3'-4"	2'-7"
#6	4'-0"	3'-1"
#7	5'-10"	4'-6"
#8	6'-8"	5'-2"
#9	7'-6"	5'-9"
#10	8'-4"	6'-5"
#11	9'-2"	7'-1"

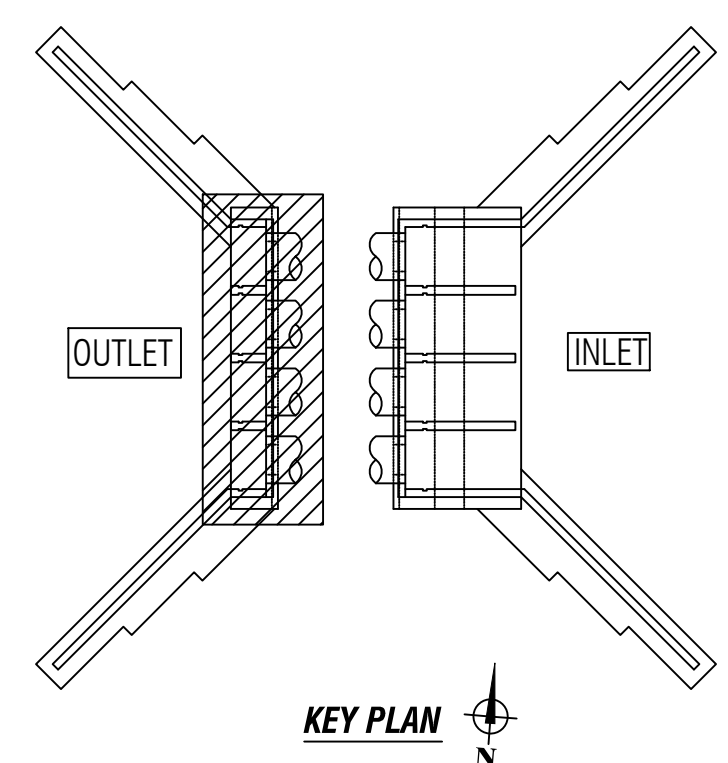
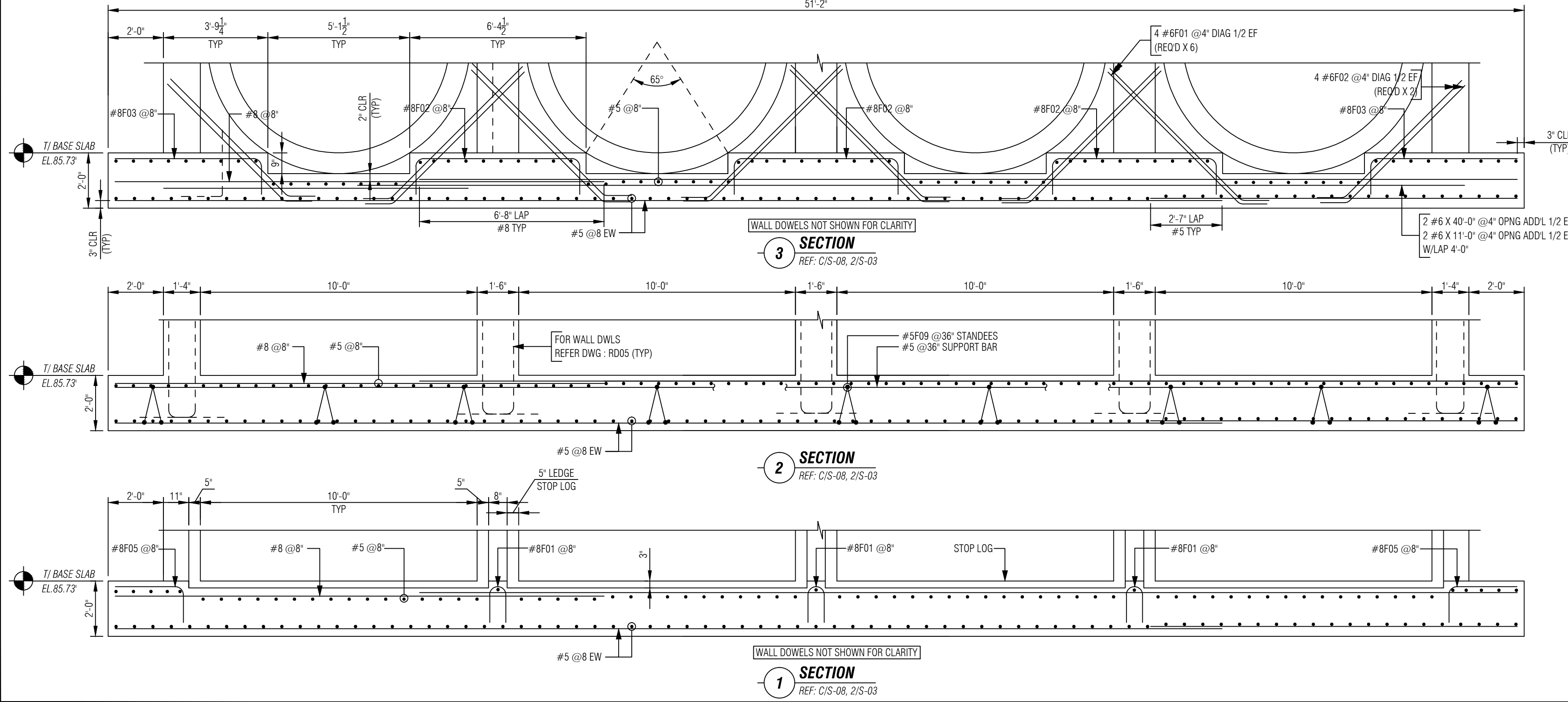
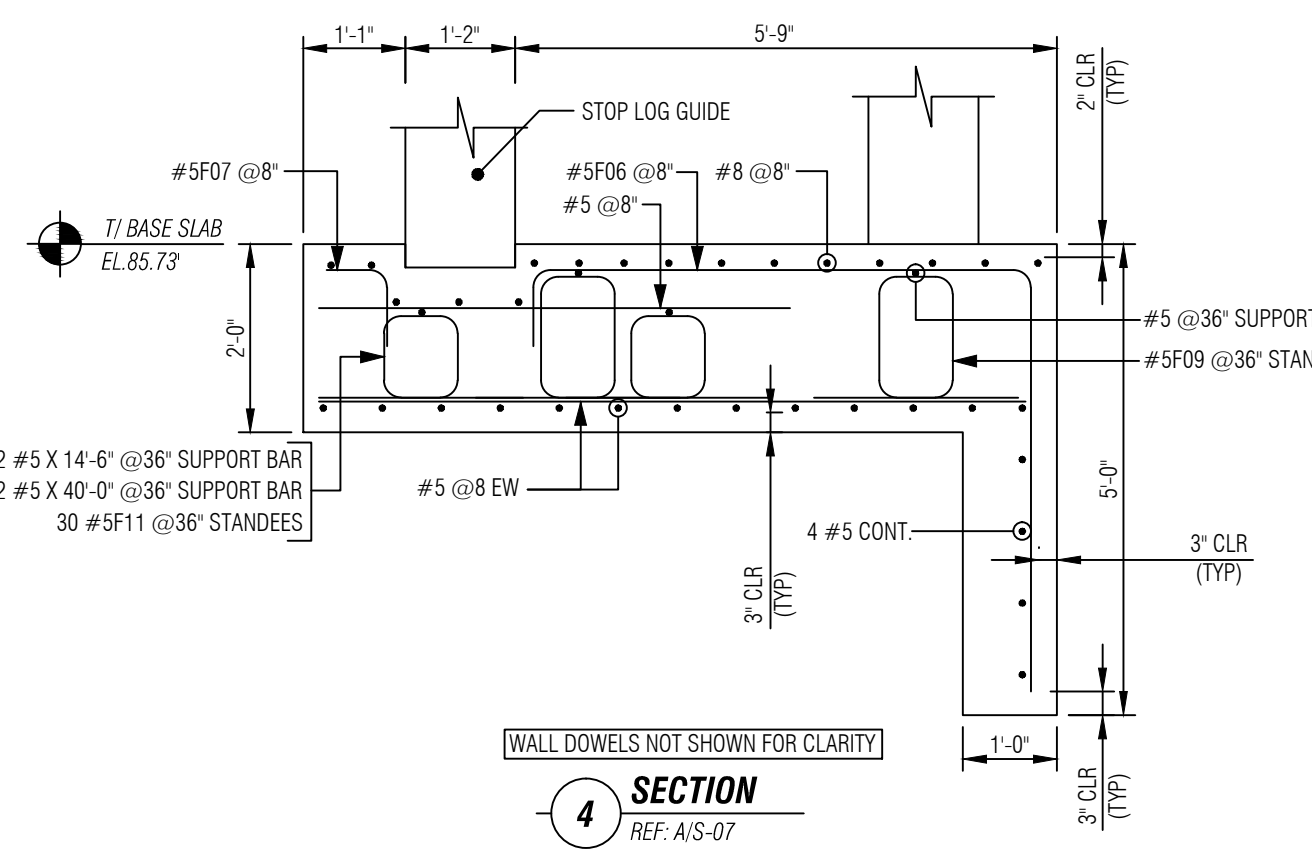
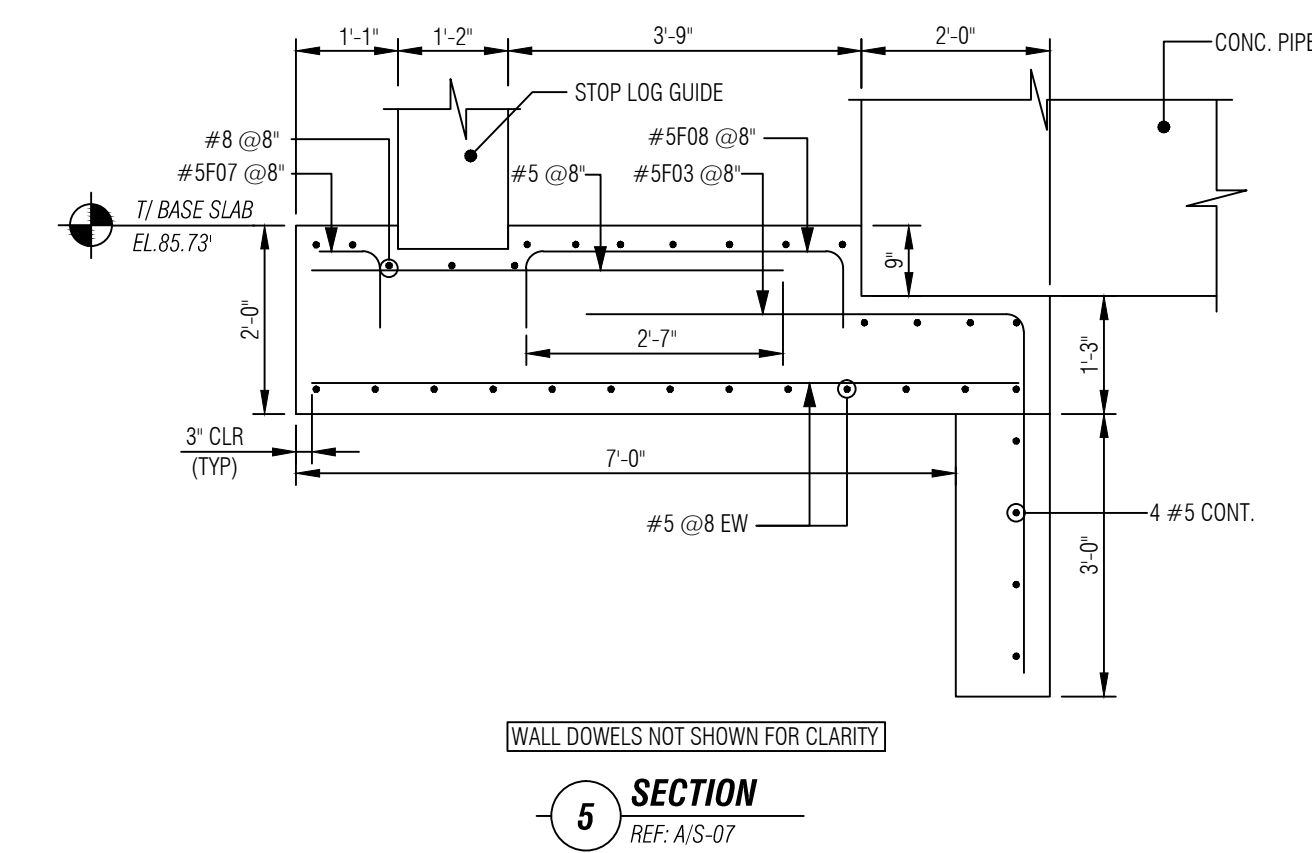
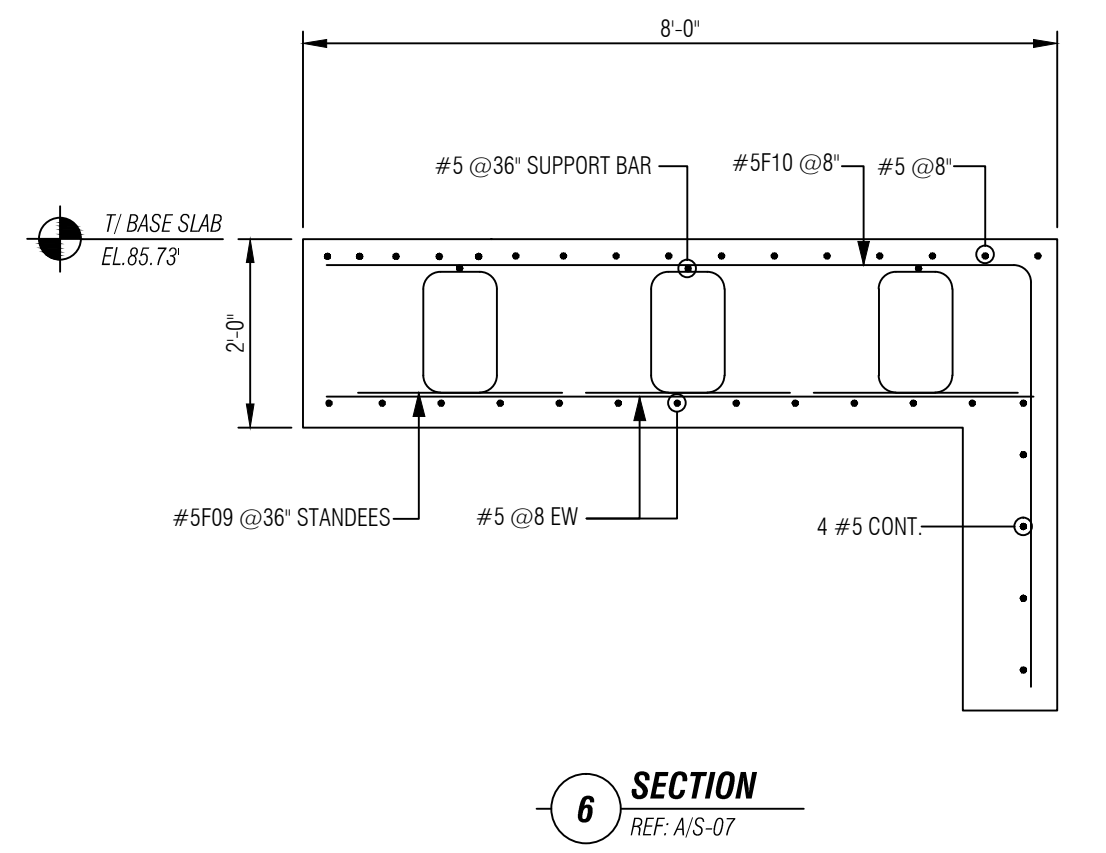
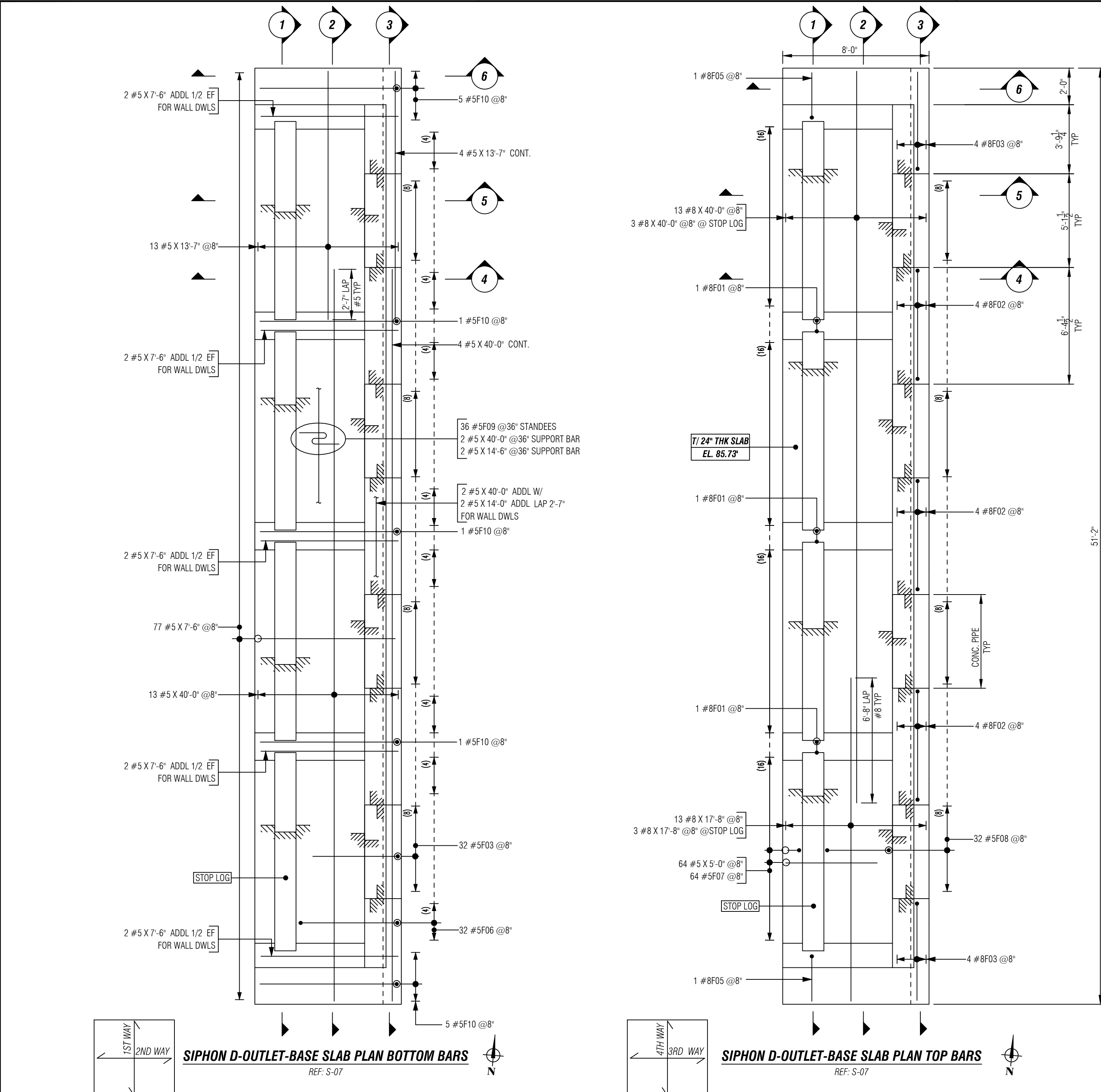
**DEVELOPMENT SCHEDULE (BLACK):**  
Per ACI 318 (4000 PSI)  
As per Lap Schedule REF: S-02

BAR#	LENGTHS	
	TOP	OTHERS
#3	1'-6"	1'-2"
#4	2'-1"	1'-7"
#5	2'-7"	2'-0"
#6	3'-1"	2'-4"
#7	4'-6"	3'-6"
#8	5'-2"	3'-11"
#9	5'-9"	4'-5"
#10	6'-5"	4'-11"
#11	7'-1"	5'-5"

TOP BARS ARE HORIZONTAL BARS WITH MORE THAN 12" OF CONCRETE BELOW THE BARS.

PLEASE READ THIS DRAWING IN CONJUNCTION WITH WALL DOWELS DWG RD05

U.O.N. ALL REIN ON THIS DWG IS BLACK UNCOATED REBAR



Rev No.	DESCRIPTION / REMARK	DATE	Weight In Lbs	BY
0		10.20.17		Approval Sent For

**LEGEND**

AB: Addl. Bottom	AT: Addl. Top
ADDL: Additional Bar	ALT: Alternate
CB: Corner Bar	B: Bottom
COL: Column	CLR: Clear
D/V: Dowel Vertical	DWLS: Dowels
EMBD: Embedment	EL: Elevation
EF: Each Face	ES: Each side
EW: Each Way	ES: Footing
GB: Grade Beam	H: Horizontal
IF: Inside face	LW: Long way
OPNG: Opening	OC: On Center
OF: Outside Face	REF: Reference
T: Top	SW: Short Way
W/F: Welded Wire Fabric	V: Vertical
UON: Unless Otherwise Noted	

18	Section Mark
18	Elevation Mark

ASTM A615 (60 BLACK)  
REF: S-01  
NOTE: This Placing Dwg is for rebar placing purposes only. Do Not Scale. Use Placing Dwg in conjunction with contract plans & specs. Info contained within Placing Dwg is not for construction, unless the engineer or contractor approves it.



**Omni Rebar Inc.**  
293 Castle Ave, Suite 1c  
Westbury, NY 11590  
516.544.4333

Customer:	
Project:	
Location:	
Title:	Siphon D-outlet-Base Slab Bottom & Top Bars

Job: -  
OR: C17-034

**RD04**