

BAR LIST

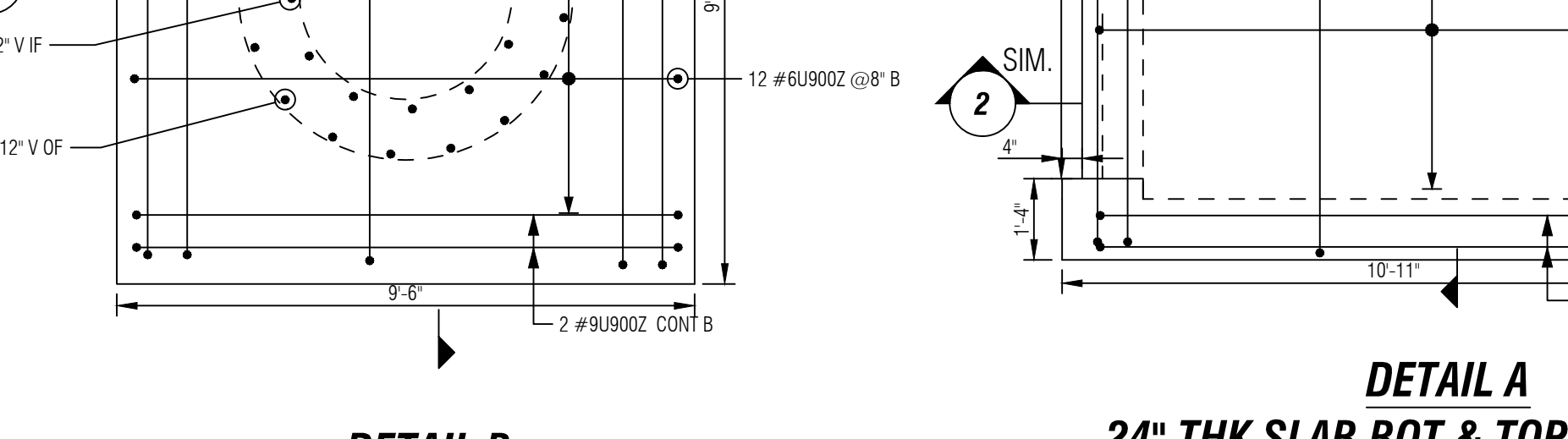
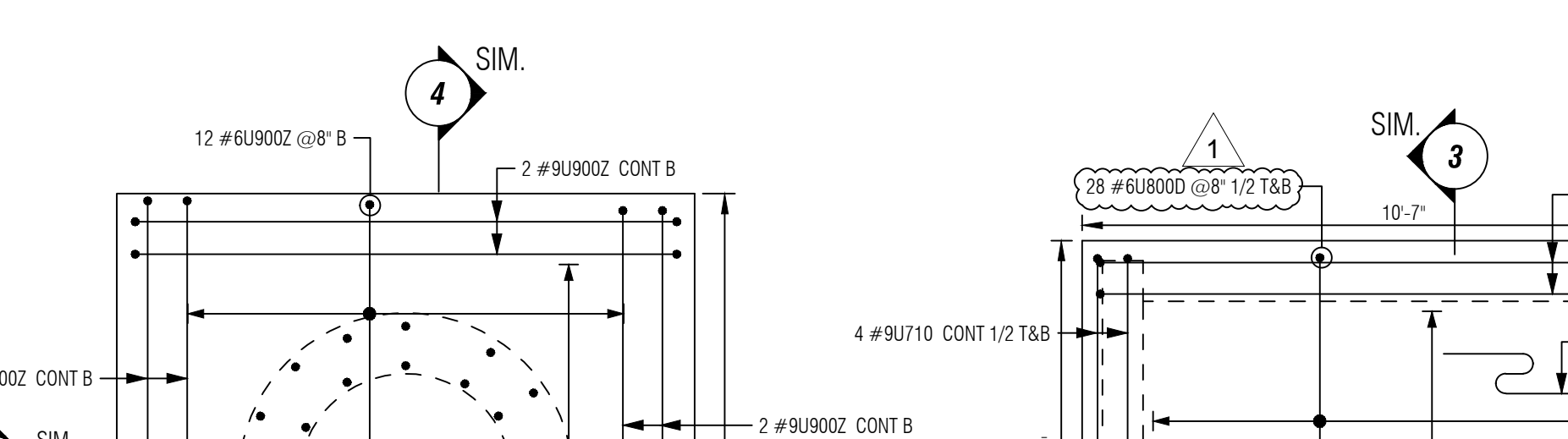
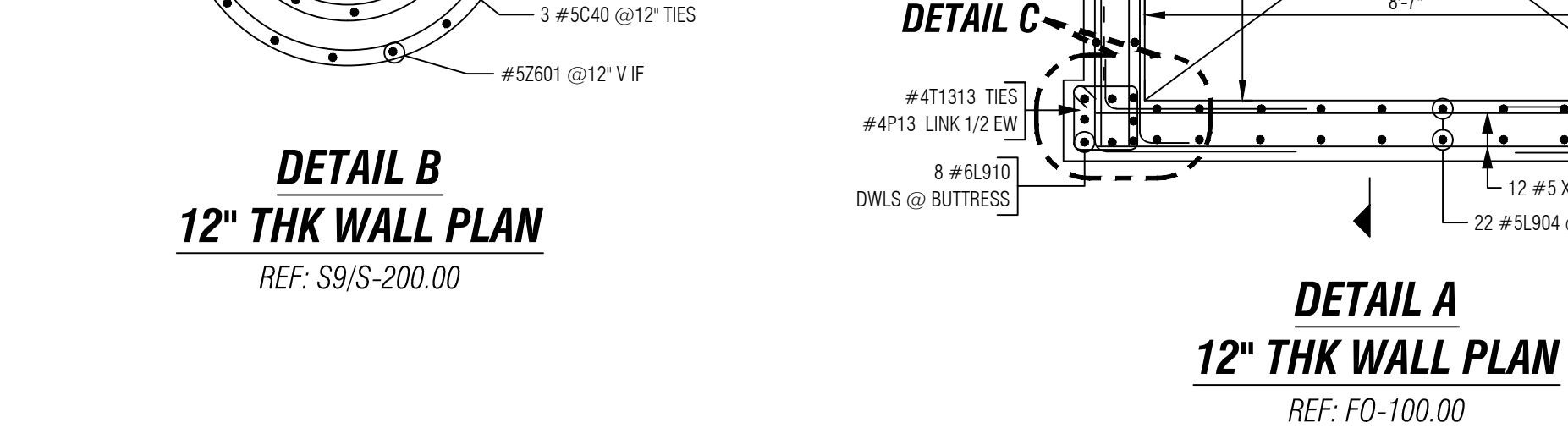
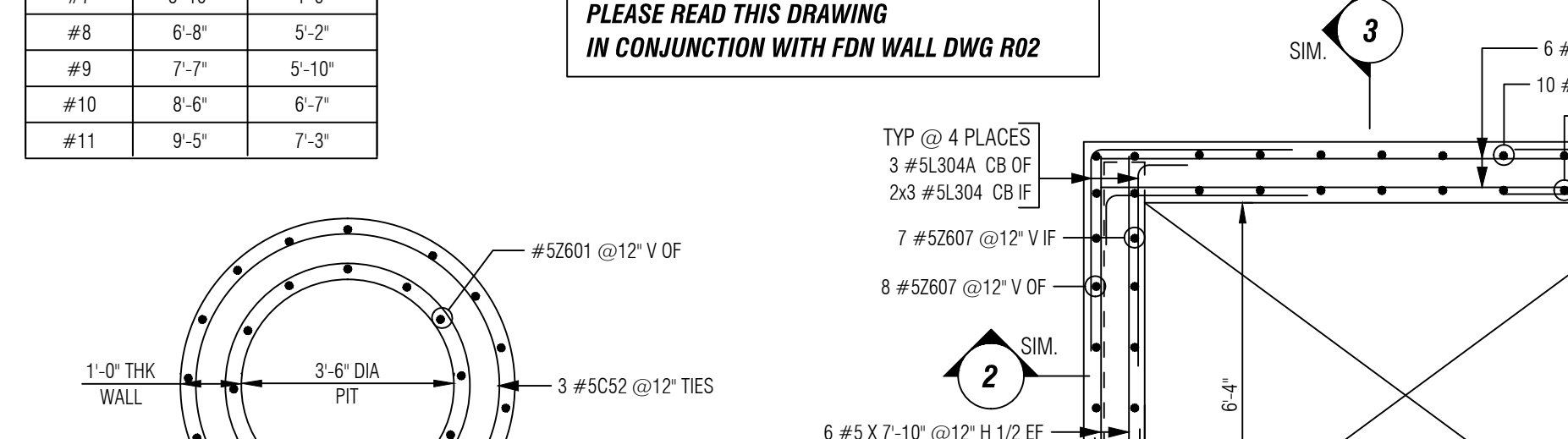
Bar Mark	Qty	Len	Total Length	W	H	C	D	E	F	G	H	I	J	K	L	M	N	O	P	Q	R	S	T	U	V	W	X	Y	Z
41713	6	44	264	5	0	11	0	4	11	1	1	1	1	1	1	1	1	1	1	1	1	1	1	1	1	1	1	1	
4912	12	44	528	5	0	11	0	4	11	1	1	1	1	1	1	1	1	1	1	1	1	1	1	1	1	1	1	1	
5207	48	45	2160	6	0	2	0	7	0	6	7	0	0	0	0	0	0	0	0	0	0	0	0	0	0	0	0	0	
5209	23	45	1035	10	0	2	0	7	0	6	7	0	0	0	0	0	0	0	0	0	0	0	0	0	0	0	0	0	
5210	13	45	585	7	0	2	0	7	0	6	7	0	0	0	0	0	0	0	0	0	0	0	0	0	0	0	0	0	
5211	24	45	1080	7	0	2	0	7	0	6	7	0	0	0	0	0	0	0	0	0	0	0	0	0	0	0	0	0	
5212	24	45	1080	7	0	2	0	7	0	6	7	0	0	0	0	0	0	0	0	0	0	0	0	0	0	0	0	0	
5213	24	45	1080	7	0	2	0	7	0	6	7	0	0	0	0	0	0	0	0	0	0	0	0	0	0	0	0	0	
5214	24	45	1080	7	0	2	0	7	0	6	7	0	0	0	0	0	0	0	0	0	0	0	0	0	0	0	0	0	
5215	24	45	1080	7	0	2	0	7	0	6	7	0	0	0	0	0	0	0	0	0	0	0	0	0	0	0	0	0	
5216	24	45	1080	7	0	2	0	7	0	6	7	0	0	0	0	0	0	0	0	0	0	0	0	0	0	0	0	0	
5217	24	45	1080	7	0	2	0	7	0	6	7	0	0	0	0	0	0	0	0	0	0	0	0	0	0	0	0	0	
5218	24	45	1080	7	0	2	0	7	0	6	7	0	0	0	0	0	0	0	0	0	0	0	0	0	0	0	0	0	
5219	24	45	1080	7	0	2	0	7	0	6	7	0	0	0	0	0	0	0	0	0	0	0	0	0	0	0	0	0	
5220	24	45	1080	7	0	2	0	7	0	6	7	0	0	0	0	0	0	0	0	0	0	0	0	0	0	0	0	0	
5221	24	45	1080	7	0	2	0	7	0	6	7	0	0	0	0	0	0	0	0	0	0	0	0	0	0	0	0	0	
5222	24	45	1080	7	0	2	0	7	0	6	7	0	0	0	0	0	0	0	0	0	0	0	0	0	0	0	0	0	
5223	24	45	1080	7	0	2	0	7	0	6	7	0	0	0	0	0	0	0	0	0	0	0	0	0	0	0	0	0	
5224	24	45	1080	7	0	2	0	7	0	6	7	0	0	0	0	0	0	0	0	0	0	0	0	0	0	0	0	0	
5225	24	45	1080	7	0	2	0	7	0	6	7	0	0	0	0	0	0	0	0	0	0	0	0	0	0	0	0	0	
5226	24	45	1080	7	0	2	0	7	0	6	7	0	0	0	0	0	0	0	0	0	0	0	0	0	0	0	0	0	
5227	24	45	1080	7	0	2	0	7	0	6	7	0	0	0	0	0	0	0	0	0	0	0	0	0	0	0	0	0	
5228	24	45	1080	7	0	2	0	7	0	6	7	0	0	0	0	0	0	0	0	0	0	0	0	0	0	0	0	0	
5229	24	45	1080	7	0	2	0	7	0	6	7	0	0	0	0	0	0	0	0	0	0	0	0	0	0	0	0	0	
5230	24	45	1080	7	0	2	0	7	0	6	7	0	0	0	0	0	0	0	0	0	0	0	0	0	0	0	0	0	
5231	24	45	1080	7	0	2	0	7	0	6	7	0	0	0	0	0	0	0	0	0	0	0	0	0	0	0	0	0	
5232	24	45	1080	7	0	2	0	7	0	6	7	0	0	0	0	0	0	0	0	0	0	0	0	0	0	0	0	0	
5233	24	45	1080	7	0	2	0	7	0	6	7	0	0	0	0	0	0	0	0	0	0	0	0	0	0	0	0	0	
5234	24	45	1080	7	0	2	0	7	0	6	7	0	0	0	0	0	0	0	0	0	0	0	0	0	0	0	0	0	
5235	24	45	1080	7	0	2	0	7	0	6	7	0	0	0	0	0	0	0	0	0	0	0	0	0	0	0	0	0	
5236	24	45	1080	7	0	2	0	7	0	6	7	0	0	0	0	0	0	0	0	0	0	0	0	0	0	0	0	0	
5237	24	45	1080	7	0	2	0	7	0	6	7	0	0	0	0	0	0	0	0	0	0	0	0	0	0	0	0	0	
5238	24	45	1080	7	0	2	0	7	0	6	7	0	0	0	0	0	0	0	0	0	0	0	0	0	0	0	0	0	
5239	24	45	1080	7	0	2	0	7	0	6	7	0	0	0	0	0	0	0	0	0	0	0	0	0	0	0	0	0	
5240	24	45	1080	7	0	2	0	7	0	6	7	0	0	0	0	0	0	0	0	0	0	0	0	0	0	0	0	0	

LAP SCHEDULE (BLACK):
PER ACI 318 (4000 PSI)

BAR#	TOP	OTHERS
#3	2'-0"	2'-0"
#4	2'-8"	2'-1"
#5	3'-4"	2'-7"
#6	4'-0"	3'-1"
#7	5'-10"	4'-6"
#8	6'-8"	5'-2"
#9	7'-7"	5'-10"
#10	8'-6"	6'-7"
#11	9'-5"	7'-3"

U.O.N. ALL REIN. ON THIS DWG IS
BLACK UNCOATED REBAR

PLEASE READ THIS DRAWING
IN CONJUNCTION WITH FDN WALL DWG R02



RECORD

NO.	DATE	BY	FOR
1	03.08.17	48.671	Approval
2	02.16.17	48.047	Weight In Lbs

LEGEND

AB: Addl. Bottom	AT: Addl. Top
ADDL: Additional Bar	ALT: Alternate
CB: Corner Bar	B: Bottom
COL: Column	BLR: Clear
D.V.: Dowel Vertical	D.WLS: Dowels
EMBD: Embedment	EL: Elevation
EF: Each Side	ES: Each Side
EW: Each Way	FTG: Footing
GB: Grade Beam	H: Horizontal
OF: Outside Face	OC: On Center
OPNG: Opening	REF: Reference
TJ: Top	SW: Short Way
TYP: Typical	Vertical
WWF: Welded Wire Fabric	V: Vertical
LION: Unless Otherwise Noted	

ASTM 615 (60 BLACK)
REF: FO-100.00

NOTE: This Placing Dwg is for rebar placing purposes only. Do Not Scale. Use Placing Dwg in conjunction with contract plans & specs. Info contained within Placing Dwg is not for construction, unless the engineer or contractor approves it.

OMNI REBAR
Rebar Detailing Services

Omni Rebar Inc.
293 Castle Ave, Suite 1c
Westbury, NY 11590
516-544-4333

Customer:	Project:	Location:	Title: Mat Foundation Reinforcement Details
Job: -	OR: P17-016		
			R01